

# S J N MOULD TECH



EJECTOR PINS - DIN 1530 (01-02-2021)



MATERIAL : SILVER STEEL - THROUGH HARDENED - HARDNESS: 52 HRC TO 58 HRC

D	H x T	LENGTH (L)													
		100	130	160	200	250	300	350	400	450	500	550/600	650/700	800	1000
1.0	2.5 x 1.2	58	65	76	92	130	162								
1.2	3 x 1.5	58	65	76	92	130	162								
1.5	3 x 1.5	50	54	62	80	100	130								
2.0	4 x 2	44	52	60	76	90	110	160	220						
2.5	5 x 2	38	42	52	60	80	100	170	220						
3.0	6 x 3	35	40	44	52	68	80	130	166	190	220	330	460	600	
3.5	7 x 3	38	44	55	66	80	100								
4.0	8 x 3	38	44	54	64	72	82	120	140	190	220	330	460	600	
4.5	8 x 3	56	70	80	106	120	140								
5.0	10 x 3	44	50	60	70	84	100	130	160	198	230	300	380	500	
5.5	10 x 3	62	74	84	110	126	150								
6.0	12 x 5	50	56	65	80	94	110	170	200	250	280	430	600	760	
6.5	12 x 5	82	90	108	120	130	180								
7.0	12 x 5	82	90	108	120	130	180	250	290						
8.0	14 x 5	82	90	108	120	130	180	250	290	340	390	600	1100	1200	1550
8.5	14 x 5	110	125	140	170	220	250								
9.0	14 x 5	96	112	130	154	194	230								
10.0	16 x 5	96	112	130	154	194	230	300	360	430	510	730	1200	1400	1900
10.5	16 x 5	140	150	170	204	280	320								
11.0	16 x 5	140	150	170	204	280	320								
12.0	18 x 7	120	130	152	182	240	284	384	440	510	600	870	1350	1500	2200
14.0	22 x 7	216	246	260	290	370	490	580	700	780	970				
16.0	22 x 7	216	246	260	290	370	490	580	700	780	970	1350	2050	2500	
18.0	24 x 7	300	400	460	500	620	770	920	1100	1280	1520				
20.0	26 x 8	300	400	460	500	620	770	920	1100	1280	1520	1950	2850	3500	
25.0	32 x 10	840	900	970	1200	1380	1550	2000	2150	2430	2700	3150	4300	6000	
1/8"	6 x 3	52	60	70	90	100	120								
3/16"	3/8 x 3/16	60	70	84	110										
1/4"	7/16 x 3/16	82	92	110	124	140	180								
3/8"	5/8 x 1/4	120	140	160	190	230	280								
1/2"	3/4 x 1/4	260	280	310	340	450	560								

# S J N MOULD TECH



ISO – 10243  
 (w.e.f 1-06-22)

DIA	LENGTH	GREEN	BLUE	RED	YELLOW
10	25	28	32	36	40
	32	32	36	40	43
	38	36	39	43	46
	44	41	43	46	58
	51	43	46	58	64
	64	46	50	64	69
	76	50	62	70	81
	89	58	69	77	88
	102	72	82	88	94
305	162	232	304	343	

DIA	LENGTH	GREEN	BLUE	RED	YELLOW
12	25	34	36	41	44
	32	39	41	44	55
	38	42	44	55	58
	44	45	55	58	62
	51	55	58	62	65
	64	59	62	65	76
	76	64	65	73	79
	89	68	73	76	83
	102	77	87	99	119
	115	88	105	127	154
305	178	235	328	364	

DIA	LENGTH	GREEN	BLUE	RED	YELLOW
16	25	36	45	45	59
	32	41	55	55	62
	38	44	58	58	65
	44	55	62	62	73
	51	58	65	65	76
	64	62	73	73	83
	76	65	77	77	88
	89	73	84	84	95
	102	76	95	95	99
	115	83	123	123	134
	127	95	138	133	174
	139	110	154	165	190
	152	132	162	182	210
	305	228	349	349	433

DIA	LENGTH	GREEN	BLUE	RED	YELLOW	LIGHT GREEN
20	25	50	55	73	90	63
	32	55	68	77	95	67
	38	68	74	83	100	77
	44	73	78	91	105	81
	51	77	83	100	119	86
	64	81	96	105	123	99
	76	95	100	119	136	103
	89	99	109	145	154	122
	102	108	119	154	168	131
	115	121	136	168	190	144
	127	130	150	186	209	153
	139	134	158	199	227	167
	152	143	173	213	244	176
	178	205	210	242	264	-
203	220	233	264	297	-	
305	437	468	564	650	532	

DIA	LENGTH	GREEN	BLUE	RED	YELLOW	LIGHT GREEN
25	25	57	71	81	99	81
	32	71	77	96	110	86
	38	81	86	105	120	100
	44	85	101	114	129	109
	51	99	105	129	143	124
	64	108	120	143	158	139
	76	123	129	158	176	152
	89	150	167	171	195	186
	102	165	181	186	219	205
	115	179	200	214	238	224
	127	197	214	243	261	253
	139	226	233	261	286	281
	152	239	252	290	309	306
	178	258	271	328	347	324
203	295	305	380	390	362	
305	626	673	735	788	715	

# S J N MOULD TECH

DIA	LENGTH	GREEN	BLUE	RED	YELLOW	LIGHT GREEN
32	38	105	109	142	161	129
	44	110	124	152	176	139
	51	124	139	162	186	152
	64	143	158	186	219	167
	76	158	176	219	243	195
	89	181	200	243	271	224
	102	205	224	271	314	253
	115	235	258	316	354	286
	127	261	305	352	384	324
	139	292	320	387	435	353
	152	311	344	431	483	381
	178	350	378	474	540	429
	203	392	425	545	616	486
	254	449	502	616	678	548
305	659	774	868	1007	811	

DIA	LENGTH	GREEN	BLUE	RED	YELLOW	LIGHT GREEN
50	64	306	326	405	475	359
	76	368	380	465	574	403
	89	431	463	566	649	474
	102	482	536	600	714	528
	115	534	571	669	803	599
	127	608	637	757	886	669
	139	639	674	823	978	697
	152	681	743	929	1065	748
	178	753	864	1034	1174	847
	203	868	967	1151	1303	937
	229	1095	1242	1457	1721	1216
	254	1095	1242	1457	1721	1216
	305	1411	1691	1914	2287	1695

DIA	LENGTH	GREEN	BLUE	RED	YELLOW	LIGHT GREEN
40	51	160	169	209	244	189
	64	194	204	244	284	214
	76	214	244	284	338	265
	89	264	278	338	402	314
	102	303	323	402	466	363
	115	338	362	466	541	414
	127	382	407	531	605	468
	139	407	432	541	639	508
	152	452	466	585	670	539
	178	497	557	639	739	599
	203	561	614	705	803	677
	229	660	709	809	902	757
	254	660	709	809	902	757
	305	847	966	1130	1323	1047

DIA	LENGTH	GREEN	BLUE	RED	YELLOW
63	76	582	686	1041	1431
	89	669	736	1093	1509
	102	824	842	1258	1708
	115	881	898	1362	1821
	127	928	946	1431	1943
	139	966	1008	1523	2048
	152	1085	1153	1657	2220
	178	1162	1352	1943	2619
	203	1284	1513	2185	2939
	229	1717	1821	2774	3684
	254	1717	1821	2774	3684
	305	2168	2238	3424	4508

# S J N MOULD TECH

JIS STD - B 5012 (w.e.f 1-06-22)



SF SL SM SH SB

Dia	L	YELLOW	BLUE	RED	GREEN	BROWN
		SF	SL	SM	SH	SB
6	15	50	50	53	55	70
	20	50	55	57	63	75
	25	65	65	67	69	78
	30	65	65	67	69	78
	35	66	66	68	70	80
	40	74	74	76	78	85
	45	81	82	84	86	90
	50	89	92	92	95	97
300	273	284	291	305	315	

Dia	L	YELLOW	BLUE	RED	GREEN	BROWN
		SF	SL	SM	SH	SB
8	15	43	38	33	35	61
	20	43	38	37	35	61
	25	48	40	38	44	65
	30	53	42	38	53	70
	35	57	45	43	61	75
	40	61	48	50	65	79
	45	65	51	55	70	83
	50	70	54	65	75	87
	55	75	60	75	79	91
	60	79	65	85	83	91
	65	83	70	90	91	100
	70	87	79	100	96	104
	75	96	83	110	100	108
	80	104	87	115	104	118
300	247	247	263	273	305	

Dia	L	YELLOW	BLUE	RED	GREEN	BROWN
		SF	SL	SM	SH	SB
10	15	43	53			
	20	43	53	32	35	61
	25	47	47	35	43	65
	30	53	47	39	53	69
	35	57	47	53	61	74
	40	61	57	57	65	78
	45	65	61	61	69	82
	50	69	65	65	74	86
	55	74	69	69	78	90
	60	78	74	69	82	90
	65	82	82	74	90	99
	70	86	90	78	95	103
	75	95	99	82	99	107
	80	103	107	90	103	116
	90	110	116	116	121	126
	100	116	121	121	126	137
300	284	294	305	331	347	

Dia	L	YELLOW	BLUE	RED	GREEN	BROWN
		SF	SL	SM	SH	SB
12	20	57	53	43	47	74
	25	61	57	57	57	78
	30	65	61	53	65	82
	35	69	65	61	69	86
	40	74	69	69	74	90
	45	78	74	74	82	99
	50	82	78	78	86	103
	55	86	82	82	90	111
	60	90	86	86	99	116
	65	95	95	90	107	120
	70	99	99	95	111	124
	75	103	103	99	116	132
	80	116	111	107	120	140
	90	116	116	116	126	147
100	126	126	126	137	158	
300	336	336	347	378	420	

# S J N MOULD TECH

Dia	L	YELLOW	BLUE	RED	GREEN	BROWN
		SF	SL	SM	SH	SB
14	20/25	74	65	69	74	78
	30	78	69	74	78	82
	35	82	74	78	82	86
	40	86	78	82	86	95
	45	90	82	86	90	103
	50	95	86	90	95	107
	55	99	90	95	99	116
	60	103	95	99	103	120
	65	107	99	103	107	128
	70	111	103	107	115	137
	75	116	107	111	124	145
	80	120	111	116	128	154
90	128	120	124	128	163	
100	143	150	160	175	190	
16	20/25	82	86	90	95	99
	30	86	90	95	99	103
	35	90	95	99	103	107
	40	95	99	103	107	116
	45	99	103	107	111	124
	50	103	107	111	116	128
	55	107	111	116	120	137
	60	111	116	120	124	149
	65	120	124	128	132	154
	70	124	128	132	137	163
	75	128	132	137	141	171
	80	132	137	141	145	180
90	137	141	145	149	192	
100	141	145	149	154	205	
125	176	190	210	230	260	
18	25	82	86	90	99	103
	30	90	95	99	103	107
	35	95	99	103	107	111
	40	99	103	107	111	116
	45	103	107	111	116	124
	50	107	111	116	124	132
	55	111	116	120	132	137
	60	116	120	124	137	145
	65	120	124	132	145	149
	70	124	132	137	149	154
	75	128	137	141	154	163
	80	137	141	145	163	171
90	141	145	149	171	201	
100	145	154	159	180	205	

Dia	L	YELLOW	BLUE	RED	GREEN	BROWN
		SF	SL	SM	SH	SB
20	25	82	86	90	95	99
	30	86	90	95	99	103
	35	90	99	103	107	111
	40	95	103	107	111	116
	45	99	107	111	116	120
	50	103	111	116	120	137
	55	107	116	120	124	137
	60	111	120	124	128	163
	65	116	124	128	133	167
	70	120	128	132	138	180
	75	124	137	137	146	188
	80	128	141	145	155	201
90	137	149	154	164	217	
100	145	159	163	172	234	
125	154	167	184	189	265	
150	171	188	205	215		

Dia	L	YELLOW	BLUE	RED	GREEN	BROWN
		SF	SL	SM	SH	SB
22	25	82	86	90	95	95
	30	86	90	95	99	103
	35	95	95	99	103	111
	40	99	103	107	111	120
	45	103	107	111	116	124
	50	107	111	116	120	128
	55	111	116	121	124	137
	60	116	120	125	128	145
	65	120	124	129	132	154
	70	124	128	138	141	163
	75	128	132	142	146	180
	80	132	137	146	150	184
90	141	145	150	155	201	
100	149	154	164	168	217	
125	163	171	176	181	260	
150	184	209	215	225	307	

# S J N MOULD TECH

Dia	L	YELLOW	BLUE	RED	GREEN	BROWN
		SF	SL	SM	SH	SB
25	25	85	90	95	99	113
	30	90	95	99	104	118
	35	95	99	104	113	127
	40	99	104	108	118	132
	45	104	108	113	127	146
	50	108	113	118	132	155
	55	113	118	123	137	165
	60	118	127	132	146	174
	65	123	132	137	155	179
	70	128	138	142	161	194
	75	132	142	156	166	204
	80	138	147	161	170	208
	90	151	161	170	189	227
	100	166	170	175	194	240
	125	180	198	208	246	293
150	213	232	236	274	321	
175	236	255	265	321	358	

Dia	L	YELLOW	BLUE	RED	GREEN	BROWN
		SF	SL	SM	SH	SB
30	25	90	96	114	124	128
	30	96	100	119	128	132
	35	100	105	124	138	147
	40	105	109	132	151	156
	45	109	114	142	156	161
	50	114	124	151	161	170
	55	119	132	161	170	185
	60	124	142	166	185	198
	65	128	151	170	194	204
	70	132	156	185	198	217
	75	138	161	194	217	222
	80	142	166	198	232	236
	90	147	194	223	250	284
	100	151	204	240	284	341
	125	189	255	293	331	358
150	227	307	340	401	434	
175	255	380	405	453	490	
200	284	448	481	519	565	

Dia	L	YELLOW	BLUE	RED	GREEN	BROWN
		SF	SL	SM	SH	SB
27	25	96	100	105	114	124
	30	100	105	109	119	132
	35	105	114	119	128	138
	40	109	119	124	132	147
	45	114	124	128	138	156
	50	119	128	132	142	166
	55	124	132	142	156	175
	60	128	138	151	166	194
	65	132	147	156	170	198
	70	138	151	161	175	208
	75	142	161	166	189	217
	80	147	166	175	198	232
	90	161	185	194	217	255
	100	170	204	211	236	278
	125	194	236	250	288	326
150	223	269	293	335	396	
175	255	307	340	396	471	

Dia	L	YELLOW	BLUE	RED	GREEN	BROWN
		SF	SL	SM	SH	SB
35	40	114	132	156	170	189
	45	119	142	170	189	204
	50	128	156	185	198	227
	55	132	166	194	223	246
	60	138	175	213	236	265
	65	147	189	224	255	284
	70	156	198	238	274	302
	75	166	217	257	293	316
	80	175	227	271	312	326
	90	194	250	295	331	368
	100	208	278	323	377	401
	125	255	331	394	443	481
	150	297	401	456	513	570
	175	335	453	518	593	655
	200	377	500	584	673	738

# S J N MOULD TECH

Dia	L	YELLOW	BLUE	RED	GREEN	BROWN
		SF	SL	SM	SH	SB
40	40	134	194	224	254	273
	45	142	200	227	267	307
	50	150	214	249	278	318
	55	168	226	268	305	342
	60	180	249	293	328	362
	65	193	263	313	349	392
	70	200	284	333	368	412
	75	208	299	341	399	426
	80	224	318	361	417	462
	90	249	348	396	462	501
	100	278	377	436	497	546
	125	323	462	529	595	659
	150	377	536	618	705	763
	175	437	610	707	803	877
	200	497	689	783	902	981
	225	546	817	957	1001	1095
	250	595	833	966	1100	1204
275	672	970	1155	1344	1365	
300	751	1134	1344	1449	1523	

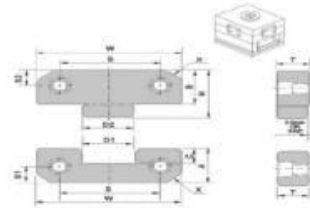
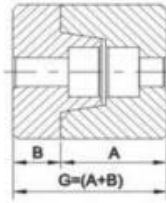
Dia	L	YELLOW	BLUE	RED	GREEN	BROWN
		SF	SL	SM	SH	SB
50	50	249	349	397	453	498
	55	268	355	420	475	517
	60	274	363	437	487	538
	65	281	391	456	520	592
	70	303	423	477	552	622
	75	323	445	502	588	649
	80	349	467	526	616	686
	90	374	518	585	691	746
	100	408	562	645	746	825
	125	498	676	774	904	989
	150	572	795	917	1073	1153
	175	647	904	1066	1227	1368
	200	736	1029	1199	1376	1567
	225	798	1155	1323	1502	1733
	250	895	1252	1462	1649	2132
	275	949	1363	1586	1838	2289
	300	1068	1461	1779	1996	2434
350	1313	1575	1995	2205	-	
400	1418	1785	2310	2520	-	

Dia	L	YELLOW	BLUE	RED	GREEN	BROWN
		SF	SL	SM	SH	SB
60	60	437	620	601	684	867
	70	442	635	659	749	911
	80	466	659	729	842	966
	90	506	709	858	927	1035
	100	566	763	986	1011	1119
	125	674	937	1133	1239	1358
	150	774	1090	1337	1442	1555
	175	882	1340	1539	1639	1768
	200	1070	1631	1752	1812	2020
	225	1113	1680	1848	1974	2237
	250	1239	1733	1986	2144	2459
	275	1365	1995	2142	2363	2700
	300	1511	2039	2377	2525	2932
	350	1733	2310	2835	2940	3360
	400	1890	2730	3255	3360	3885

Dia	L	YELLOW	BLUE	RED	GREEN	BROWN
		SF	SL	SM	SH	SB
70	70	920	1071	1234	1407	1496
	80	940	1208	1391	1659	1680
	90	970	1355	1554	1848	1869
	100	1029	1496	1712	2000	2058
	125	1276	1848	2119	2468	2531
	150	1517	2200	2515	2930	3003
	175	1764	2552	2919	3392	3476
	200	1995	2903	3318	3859	3948
	250	2489	3607	4121	4783	4893
	300	2982	4310	4919	5712	5838
	350	3465	5014	5723	6641	6783
	400	3780	5250	6090	7140	-

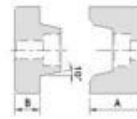
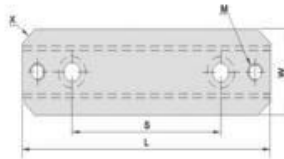
# S J N MOULD TECH

## STRAIGHT BLOCK SET (SSL)



CODE	W	T	A	B	C	D1	D2	H	S	S1	S2	X	SCH	PRICE
SSL-38	38	13	22	22	8.5	12	12	30	22	7	7	5	M6	•
SSL-50	50	16	21.5	21.5	9.5	17	17	30	34	11	11	5	M6	•
SSL-75	75	19	36	36	15	25	25	50	50	18	18	8	M10	•
SSL-100	100	19	45	45	21	35	35	65	70	22	22	10	M10	•
SSL-125	125	25	45	45	21	45	45	65	84	22	22	10	M10	•

## TAPER BLOCK SET (KY)

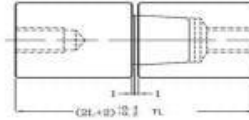
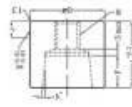
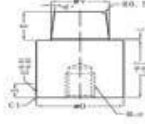


CODE	W	L	A	B	G	S	X	M	SCHS	PRICE
KY-50	25	50	17.5	8	25.5	-	5	M5	M5	•
KY-100	30	100	22	10	32	60	5	M6	M6	•
KY-150	40	150	25	13	38	100	5	M8	M8	•



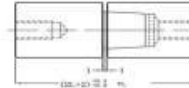
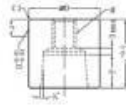
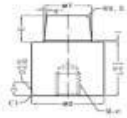
# S J N MOULD TECH

## ROUND TAPER INTERLOCK - 5°(TLA)



CODE	A	D	TL	L	V	E	F	Dk6	M	PRICE
TLA - 12	5°	12	30	14	8.5	6	5	+0.012	M4	•
TLA - 14	5°	14	30	14	9.3	6	5	+0.001	M5	•
TLA - 16	5°	16	30	14	10	6	5	+0.001	M5	•
TLA - 20	5°	20	40	19	13	9	8	+0.015	M6	•
TLA - 25	5°	25	50	24	16	12	11	+0.002	M8	•
TLA - 30	5°	30	60	29	20	15	14	+0.002	M10	•
TLA - 32	5°	32	60	29	20	15	14	+0.002	M10	•

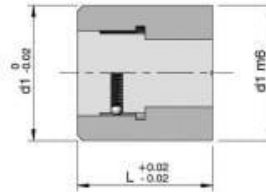
## ROUND TAPER INTERLOCK - 15°(TLB)



CODE	A	D	TL	L	E	F	Dk6	M x e	PRICE
TLB - 12	15°	12	34	16	4	8	+0.012	M4	•
TLB - 16	15°	16	34	16	7	8	+0.001	M5	•
TLB - 20	15°	20	54	26	10	13	+0.015	M8	•
TLB - 25	15°	25	54	26	10	13	+0.002	M8	•
TLB - 30	15°	30	72	35	14	20	+0.002	M10	•
TLB - 32	15°	32	72	35	14	20	+0.002	M10	•
TLB - 42	15°	42	92	45	18	25	+0.002	M10	•

# S J N MOULD TECH

## MOULD DATE INDICATOR



SIZE (d1XL)	ONLY MONTH	ONLY YEAR	MONTH & YEAR	1-31 DAYS	1-4	1-5	1-3	ABC	ARROW	0-3	0-9	A-L	RECYCLE
3x6	•	•	•										
3x8	•	•	•										
4x6	•	•	•	•	•	•	•	•	•	•	•	•	•
4x8	•	•	•	•	•	•	•	•	•	•	•	•	•
5x8	•	•	•	•	•	•	•	•	•	•	•	•	•
6x8	•	•	•	•	•	•	•	•	•	•	•	•	•
6x10	•	•	•	•	•	•	•	•	•	•	•	•	•
8x10	•	•	•	•	•	•	•	•	•	•	•	•	•
10x10	•	•	•	•	•	•	•	•	•	•	•	•	•
10x12	•	•	•	•	•	•	•	•	•	•	•	•	•
12x12	•	•	•	•	•	•	•	•	•	•	•	•	•
16x14	•	•	•	•	•	•	•	•	•	•	•	•	•
20x14	•	•	•	•	•	•	•	•	•	•	•	•	•

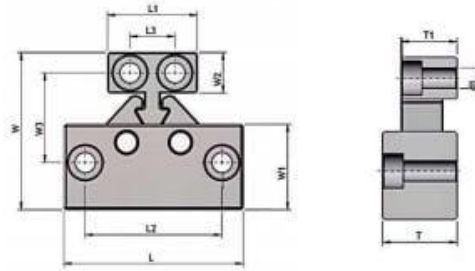
3 LAYER (6 YEARS & 12 MONTHS)	
6x10	•
8x10	•
10x12	•
12x14	•
16x14	•
20x14	•



- STOCK AVAILABLE

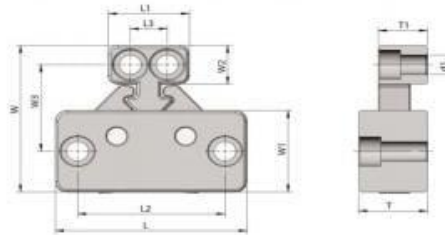
# S J N MOULD TECH

## MOULD LATCH TYPE A



CODE	L	L1	L2	L3	W	W1	W2	W3	T	T1	d1	FORCE (kgs)	PRICE
<b>LIGHT DUTY A</b>	55	30	42	16	44	25	13	27.5	22	17	6.5	45	•
<b>MEDIUM DUTY A</b>	80	40	61	20	70	38	18	40	28	24	8.5	110	•
<b>HEAVY DUTY A</b>	120	62	95	30	106	57	27	60	48	38	12.5	225	•

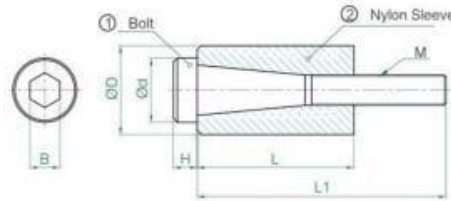
## MOULD LATCH TYPE B



CODE	L	L1	L2	L3	W	W1	W2	W3	T	T1	D1	FORCE (kg)	PRICE
<b>MEDIUM DUTY-B</b>	78	33	60	15	68	38	18	40	38	19.5	8.5	500	•
<b>HEAVY DUTY-B</b>	91	37	72	17	103	51	30	58	39.5	31	10.5	900	•

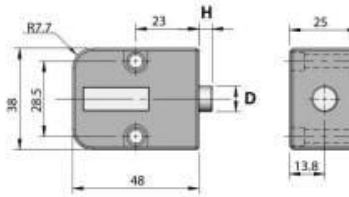
# S J N MOULD TECH

## PARTING LOCKS



CODE	D	d	M	B	L	L1	H	PRICE
PL-10	10	8.5	M5	4	18	28	3	•
PL-12	12	11.5	M6	5	20	30	4.5	•
PL-13	13	11.5	M6	5	20	30	4.5	•
PL-16	16	14	M8	6	25	35	5.5	•
PL-20	20	14	M10	8	30	40	5.5	•
PL-25	25	16	M10	8	30	40	5.5	•
PL-25(M12)	25	18	M12	12	30	40	8.5	•
PL-30	30	18	M12	12	35	45	8.5	•

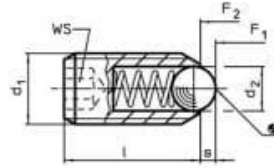
## MOULD SHOT COUNTER



CODE	D	H	SCREW	PRICE
MSC-01	6.2	5.0	M4.0x25L	•
MSC-02	9.8	5.0	M4.0x25L	•

# S J N MOULD TECH

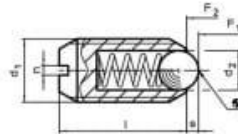
## BALL PLUNGER (ALLEN TYPE)



BLACK OXIDE STEEL BODY – HARDENED STEEL BALL – STAINLESS STEEL SPRING

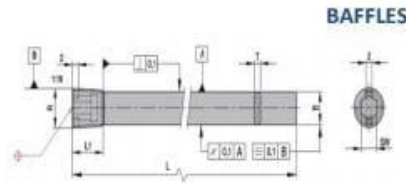
CODE	d1	d2	L	S	WS	SPRING LOAD F1 N~	SPRING LOAD F2 N~
BPA-3	M3	1.5	7.5	0.5	-	-	-
BPA-4	M4	2.5	9	0.8	2.0	8.0	13.0
BPA-5	M5	3.0	14	0.9	2.5	6.0	12.0
BPA-6	M6	3.5	12/15	1.0	3.0	11.0	18.0
BPA-8	M8	4.5	16/18	1.5	4.0	18.0	31.0
BPA-10	M10	6.0	16/23	2.0	5.0	24.0	45.0
BPA-12	M12	8.0	20/25	2.5	6.0	26.0	49.0
BPA-16	M16	10.0	25	3.5	8.0	41.0	86.0
BPA-20	M20	12.0	43	4.5	10.0	66.0	111.0

## BALL PLUNGER (SCREW TYPE)



CODE	d1	d2	L	S	n	SPRING LOAD F1 N~	SPRING LOAD F2 N~
BPS-3	M3	1.5	7.5	0.5	-	-	-
BPS-4	M4	2.5	9	0.8	0.6	8.0	13.0
BPS-5	M5	3.0	14	0.9	0.8	6.0	12.0
BPS-6	M6	3.5	15	1.0	1.0	11.0	18.0
BPS-8	M8	4.5	18	1.5	1.2	18.0	31.0
BPS-10	M10	6.0	23	2.0	1.5	24.0	45.0
BPS-12	M12	8.0	26	2.5	2.0	26.0	49.0
BPS-16	M16	10.0	33	3.5	2.0	41.0	86.0

# S J N MOULD TECH



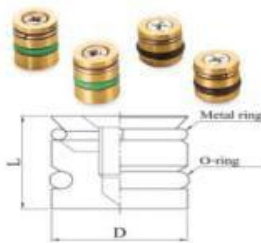
**BAFFLES**

CODE	R	L	T	SW
BAF-1/8-100	1/8-BSP	104	1.6	5
BAF-1/8-200	1/8-BSP	204	2.4	
BAF-1/4-125	1/4-BSP	131		6
BAF-1/4-250	1/4-BSP	258		

CODE	R	L	T	SW
BAF-3/8-150	3/8-BSP	156	2.4	8
BAF-3/8-300	3/8-BSP	309		10
BAF-1/2-200	1/2-BSP	207		

### COOLING PLUGS (O-RING TYPE)

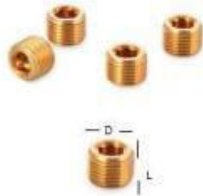
(AVAILABLE IN GREEN & BLACK SILICON RUBBER ORING)(SCREW AND ALLEN TYPE)



CODE	D	L	HEX
SCTP-8	M8x0.75	8	4
SCTP-10	M10x1.0	8	5
SCTP-12	M12x1.5	8	6
SCTP-14	M14x1.5	10	7
SCTP-1/8 BSP	1/8" BSP	7	5
SCTP-1/4 BSP	1/4" BSP	9	6
SCTP-3/8 BSP	3/8" BSP	10	8

CODE	D	L	HEX
SCTP-1/2 BSP	1/2" BSP	12	10
SCTP-3/4 BSP	3/4" BSP	14	14
SCTP-1/4 BSPT	1/4" BSPT	9	6
SCTP-3/8 BSPT	3/8" BSPT	10	8
SCTP-1/2 BSPT	1/2" BSPT	12	10
SCTP-3/4 BSPT	3/4" BSPT	14	14

### COOLING PLUGS (THREAD TYPE)



CODE	D	L
SCP-4	4	8
SCP-6	6	10
SCP-8	8	10
SCP-10	10	10
SCP-12	12	12
SCP-14	14	13

CODE	D	L
SCP-16	16	14
SCP-18	18	16
SCP-20	20	19
SCP-24	24	19
SCP-25	25	19